



0 + + 0 0 + 0 + 0 0 + + 0 0 0 0 + + 0 0 + 0 0 0 + 0 + 0 0 + 0 0 0 + 0 0 + + + 0 0 + 0 0 + 0 0 0 + + 0 0 + 0 + 0 0 0 0 0 0 0
+ 0 0 0 + 0 + 0 0 0 0 0 + 0 V I S I O N 0 0 0 + 0 + 0 0 0 + + 0 0 + 0 0 + 0 0 + 0 + 0 0 0 + 0 0 0 + 0 0 0 + 0 0 0 +
0 0 0 + 0 0 0 + + 0 0 0 + 0 0 0 + 0 0 0 + 0 F O R + T H E + N E W 0 0 0 + 0 + 0 + 0 0 + + 0 + 0 0 0 + 0 0 + 0 + 0 + + 0 0 + 0 0
+ + + C Y B E R + C E N T E R + F O R + E D U C A T I O N + A N D + I N N O V A T I O N + + + + 0 0 0 + 0 + + 0 0 0 0 0 0 0 0
0 0 0 0 + 0 0 0 0 0 0 0 0 + 0 0 + 0 H O M E + O F + T H E + N A T I O N A L + C R Y P T O L O G I C + M U S E U M + + 0 0 0 + +
0 + + + 0 + 0 + 0 0 + + + 0 + 0 + + + 0 0 + 0 0 0 + 0 0 0 0 + 0 + 0 0 + 0 0 + + + 0 0 + 0 + 0 0 0 0 + + 0 0 + 0 + + 0 0 0 + + 0



JOIN US AND GET INVOLVED!



Your participation, volunteer leadership and support is urgently needed to help us conceptualize, capitalize and construct the new Cyber Center for Education and Innovation,

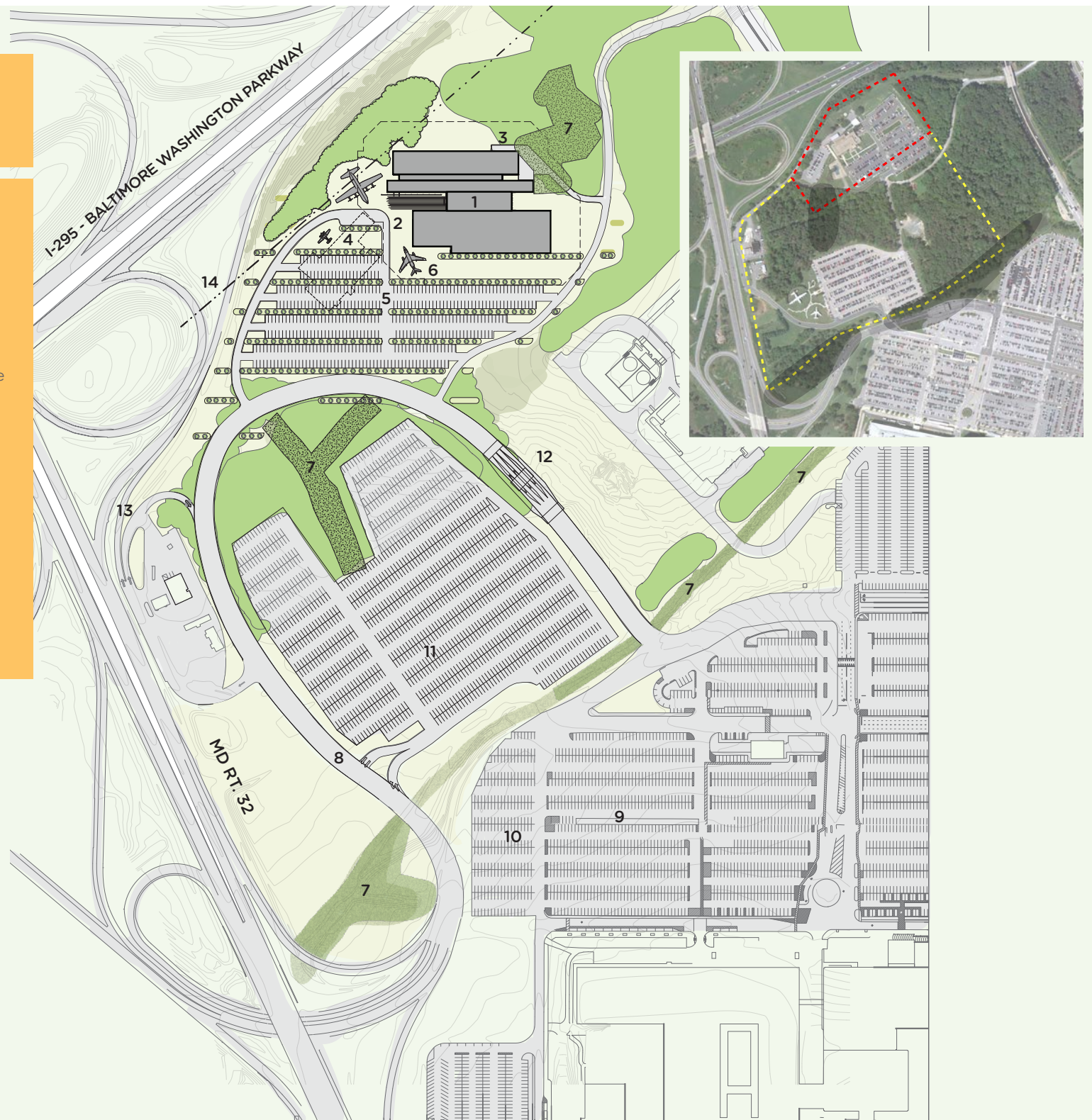
Home of the National Cryptologic Museum. Join us now! To discuss your interest in supporting our efforts to create this vital new resource, please contact:

MGen Roderick J. Isler, USA (Ret)

Vice President, Cyber Center
and New Museum Campaign

National Cryptologic Museum Foundation
P.O. Box 1563
Millersville, MD 21108
Office: 443-270-5391
Cell: 301-785-0896
goaisler@aol.com

- 1 Cyber Center for Education and Innovation
- 2 Drop-off
- 3 Service
- 4 Existing Museum
- 5 Expanded / re-configured lot N11
(± 453 spaces)
- 6 National Vigilance Park
- 7 Wetlands
- 8 Re-route Canine Road
- 9 Current NSA Parking lot N1
- 10 Expanded lot N1 (± 275 spaces)
- 11 Expanded NSA Parking lot N10
(± 1725 spaces total)
- 12 Relocated VCP-1
- 13 New ramp to BWI Parkway
- 14 200' setback from BWI Parkway





HELP US CONCEPTUALIZE AND CREATE THIS VITAL NEW NATIONAL ENTERPRISE

THE CYBER CENTER FOR EDUCATION AND INNOVATION, HOME OF THE NATIONAL CRYPTOLOGIC MUSEUM

will recall and honor the service, sacrifice and contributions of the Cryptologic Community from the past and present; it will act as a catalyst for those who will serve in the future. It is destined to embody and illuminate the NSA/CSS core values of Cryptologic Excellence: Yesterday, Today and Tomorrow. It will advance the public's understanding and appreciation for the role the Cryptologic Community plays in America's national security.

The project is a private-public partnership of the National Cryptologic Museum Foundation and National Security Agency.

The partnership team envisions the Cyber Center as an integrated multi-purpose facility serving multiple public and private stakeholders.



Message from Lieutenant General Kenneth A. Minihan, USAF (Ret)

Former Director, National Security Agency/Central Security Service
Chairman, Founders' Group, Cyber Center and New Museum Campaign



WE ARE ENGAGED IN A VITAL, NEW PUBLIC enterprise. Our mission is to build and equip an iconic Cyber Center for Education and Innovation and Museum dedicated to explaining the vital role cryptology, signals intelligence and cyber security play in defending our nation. It is a personal honor to help lead the rapidly emerging public-private partnership between the National Security Agency and the National Cryptologic Museum Foundation that will seek to make this mission a reality.

The planned state-of-the-art Cyber Center and new National Cryptologic Museum will include iconic exhibits, artifacts and intelligence stories from NSA and other Intelligence Community organizations that span five centuries of cryptologic history. The Center will help lift the veil of secrecy surrounding the extraordinary collaborative work performed by NSA and their Intelligence Community and Industry partners to provide our nation's leaders with both critical foreign intelligence, and protect our own national communications systems from foreign exploitation. The Center is expected to become a focal point in the National Capital region for information dissemination, policy discussion and education. Among the project's goals:

- To **EDUCATE** the public on the role of cryptology, signals intelligence and cyber security in our nation's defense.

- To **STIMULATE** visitor understanding on how mathematics, computer sciences, engineering, technology and foreign languages are integrated in the NSA's work.
- To **COMMEMORATE** the extraordinary accomplishments, contributions and sacrifices of the NSA civilian, military and contractor community and the people who have served within it.
- To **INTEREST** and **ATTRACT** young people to consider careers in the intelligence field.

While the NSA will assume the operating costs for the new facility, the burden of securing capital construction funding falls to the private sector. For that reason, we have begun to organize a building campaign seeking roughly \$60 million from private and public sources. This campaign is to be led by a "Founders' Group" consisting of distinguished and committed leaders from the corporate and philanthropic community—people who share and support the visionary goals of the project and wish to help make it a reality.

I invite you to look closely at this presentation. After doing so, I hope you will choose to participate in this most important endeavor by becoming a Founder.

[illegible]

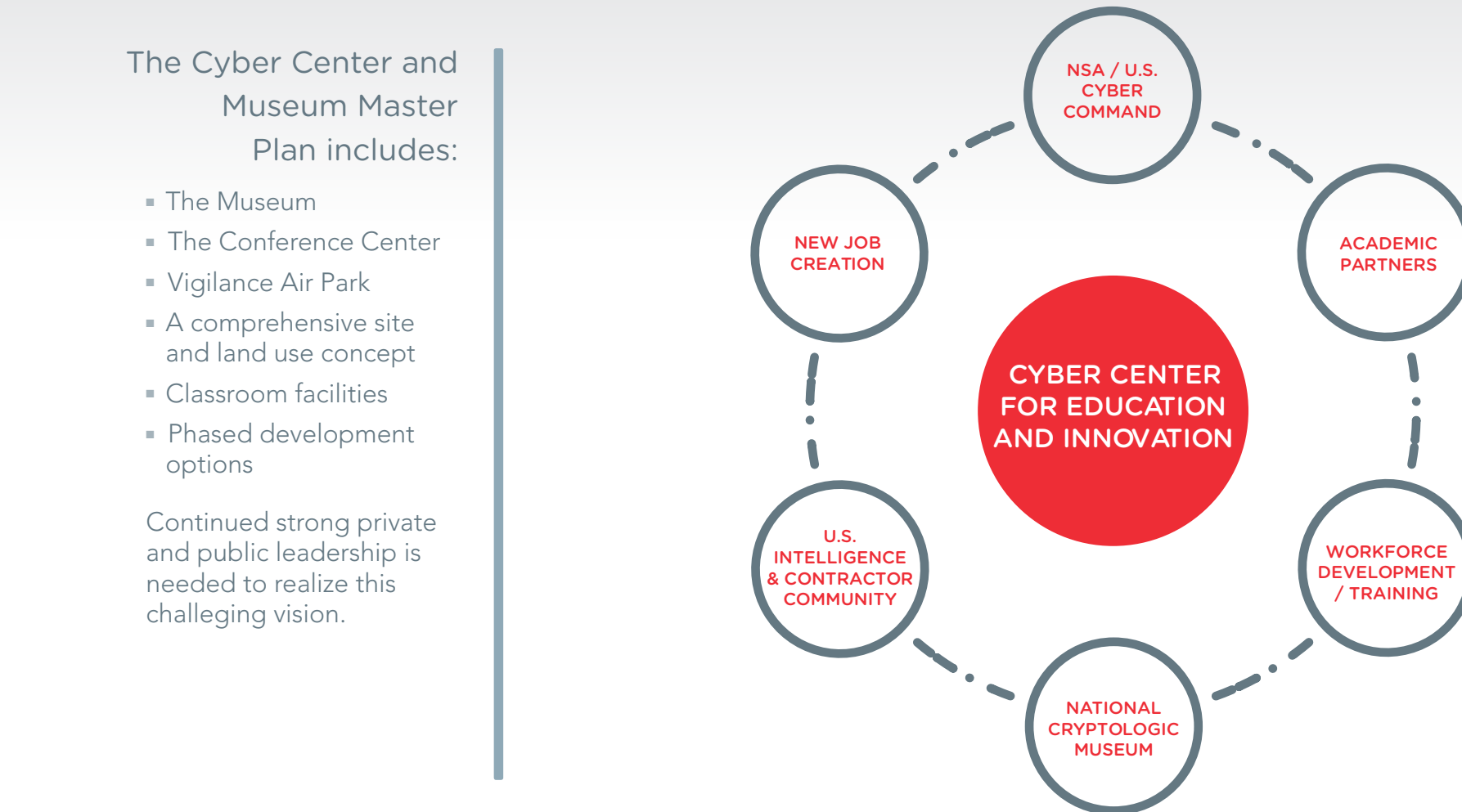
The Cyber Center and Museum Master Plan includes:

- The Museum
- The Conference Center
- Vigilance Air Park
- A comprehensive site and land use concept
- Classroom facilities
- Phased development options

Continued strong private and public leadership is needed to realize this challenging vision.

- The Museum
- The Conference Center
- Vigilance Air Park
- A comprehensive site and land use concept
- Classroom facilities
- Phased development options

Continued strong private and public leadership is needed to realize this challenging vision.



Vision for the Cyber Center for Education and Innovation



EDUCATE

the nation's brightest young minds to consider careers in computer science, technology, engineering, mathematics and linguistics in support of our nation's security

STIMULATE

dialogue on the broad national security issues and policy concerns emerging from cyber technology proliferation

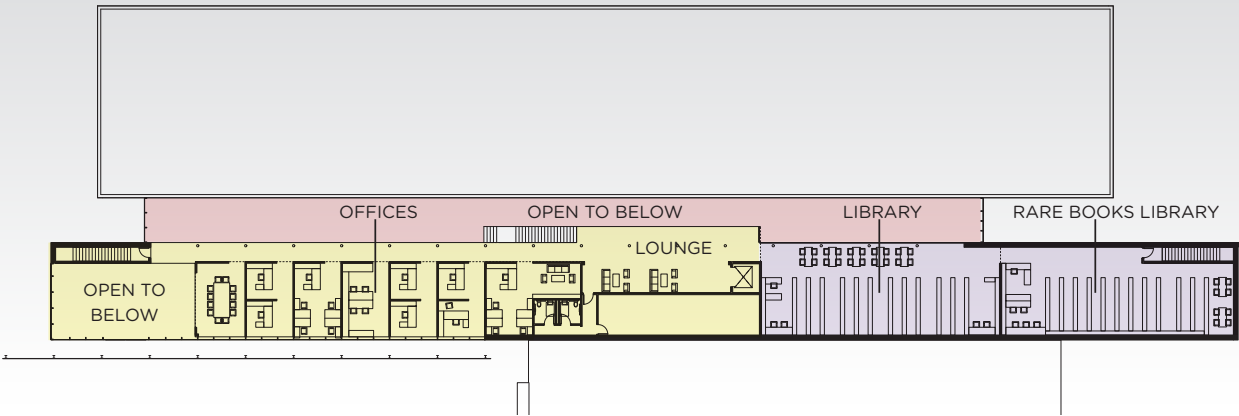


COMMEMORATE

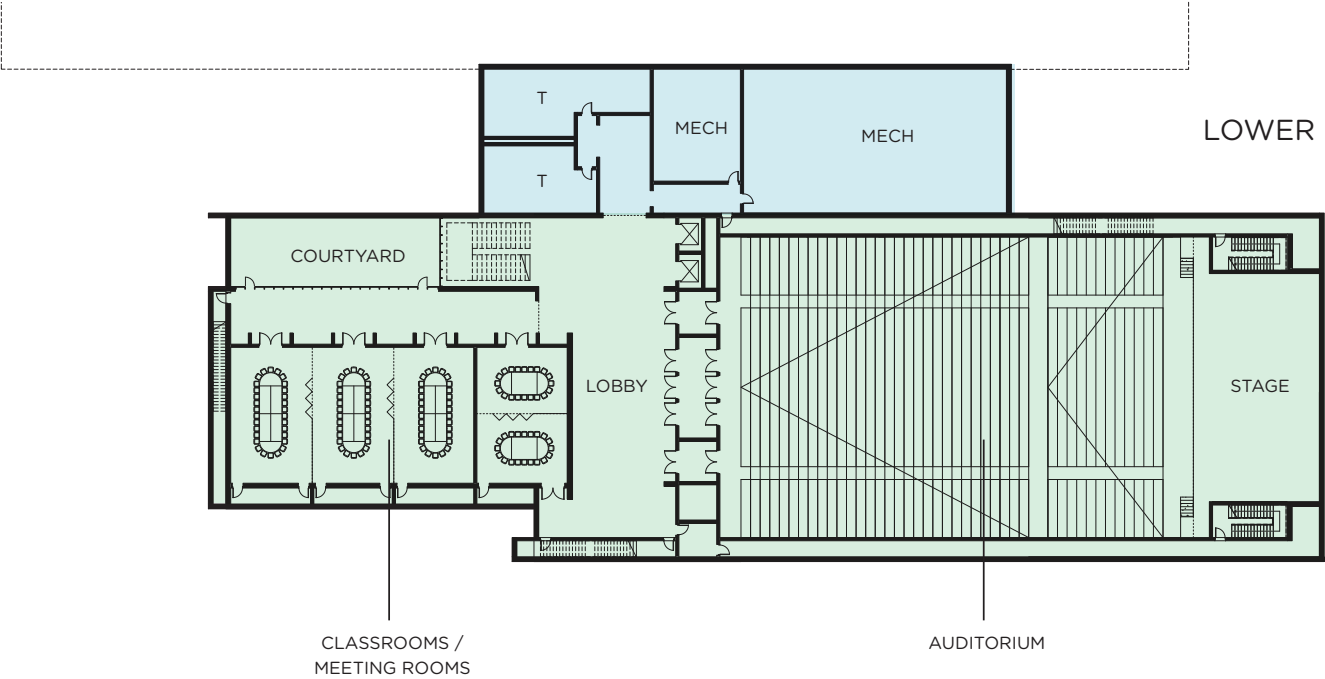
those who "served in silence" with valor and distinction, and whose accomplishments helped to enhance and preserve our way of life

[illegible]

Vision for the Cyber Center for Education and Innovation



UPPER LEVEL PLAN



LOWER LEVEL PLAN

- OFFICES / LOUNGE
- LIBRARY
- AUDITORIA + EDUCATION CENTER
- SERVICE

The Founders' Group Role

Current Founders' Group Membership



LtGen Kenneth A. Minihan
Chairman, Founders' Group
Former Director, NSA/CSS, Managing
Director, Paladin Capital Partners



Lynn Dugle
President, Intelligence,
Information & Services,
Raytheon Company



William Dunahoo
President
Praxis Engineering



Darrell Durst
VP Cyber Solutions,
Lockheed Martin IS&GS National



Robert P. Frisbie
VP/GM Global IT Solutions,
BAE Systems, Inc.



Mark Gerencser
National Security
Education Board



Chris Goodrich
Senior Vice President Missions,
ManTech International



Karl Guntow
Chief Executive Officer
and Founder
CyberPoint International



Thomas B. Howell
Chief Executive Officer,
TechUSA

The Founders' Group, a lay leadership body, has been formed to spearhead the private/public capital campaign and help secure the project's financial needs.

This body has the following responsibilities:

- Provide private-sector leadership to create the new Cyber Center and Museum.
- Advise on architectural/exhibit design and other project parameters.
- Shape the public-private fund raising campaign.
- Contribute directly and recruit potential donors from peer networks.
- Advocate for public funding with NSA/CSS coordination.

Project Strategy: A Five-Prong Approach

A five-prong strategy is guiding the development of the Cyber Center and Museum.

The five near-term strategy elements include:

1. **Expand Founders' Group:** increase membership to 25+ by the end of 2014 and secure \$10-15 million in private funds.
2. **Secure top leadership gifts:** target and cultivate a small number of outsized donations that will ensure campaign success.
3. **Pursue public funding:** Continue to develop sources of federal, state and local funding.
4. **Update architecture and exhibit design:** Evolve existing designs in concert with the Cyber Center for Education and Innovation vision.
5. **Develop cyber education partnerships:** Work with leading local and regional academic institutions to provide enhanced technical training and job creation opportunities.

Current Founders' Group Membership



Dr. David Kahn
Honorary Member,
Founders' Group



Tom Kirchmaier
President, Advanced
Information Systems,
General Dynamics



William "Brit" Kirwan
Chancellor, University
System of Maryland



Wayne Lingafelter
President, Development
& Construction Services, COPT



Christopher Marzilli
President, C4 Systems
General Dynamics



Leonard E. Moodispaw
Chief Executive Officer,
KEYW Corporation



Beatriz Schweitzer
Director of Business Development,
Schweitzer Engineering Laboratories



Edmund O. Schweitzer, III, Ph.D.
President, Schweitzer
Engineering Laboratories



Mike Thomas
Senior Vice President
Booz Allen Hamilton



Scott D. White
Vice President, Intelligence
Northrop Grumman

Capital Campaign Organization



The private-sector capital campaign is providing impetus for financial development of the Cyber Center and Museum.

The capital campaign is organized as follows:

- Driven by the Founders' Group, who serve as the project's philanthropic leadership.
- Segmented into "Quiet" and "Public" phases, with transition points determined by attainment of operational benchmarks.

The purpose of the ongoing "Quiet" phase is to organize the campaign, conduct major private and public donor development, pursue leadership giving, build momentum and create advocacy opportunities for the project without external fanfare. The campaign will transition to its "Public" phase upon attainment of the following benchmarks:

- A minimum of 25 Founders recruited and solicited.
- A minimum of \$25 million in private and public funding commitments pledged or banked.
- Evidence of sufficient donor prospects to complete campaign.
- Impressive architecture designs & compelling exhibit plans completed.
- A positive public relations climate, conducive to effective campaigning.

Age Group	Percentage
18-24	~15%
25-34	~35%
35-44	~30%
45-54	~25%
55-64	~20%
65-74	~15%
75-84	~10%
85+	~5%

The Public-Private Partnership

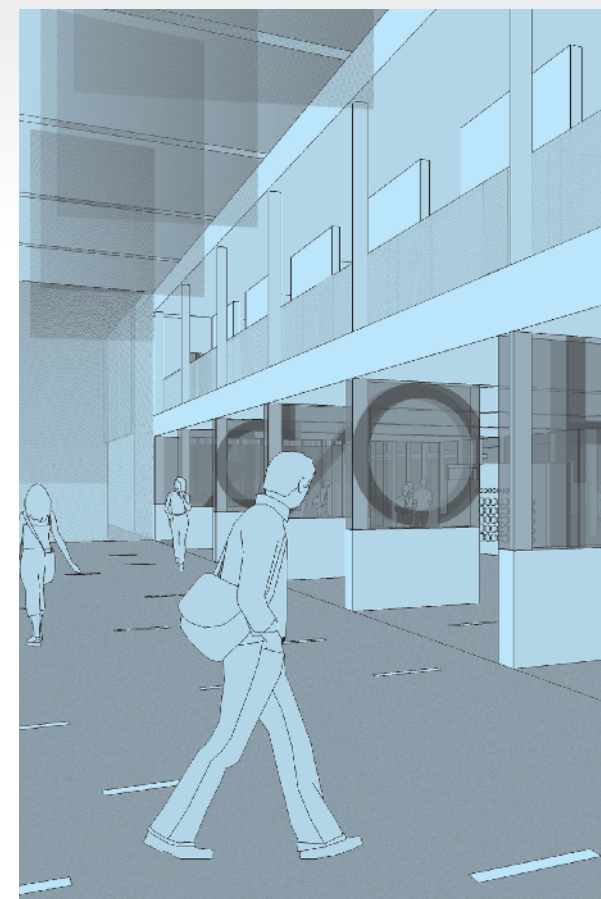
Development of the new Cyber Center and Museum is being undertaken as a public-private partnership of the NSA and the nonprofit National Cryptologic Museum Foundation.

Private-sector team members include:

- **LtGen Kenneth Minihan, USAF (Ret)**
Chairman, Founders' Group.
- **MGen Roderick Isler, USA (Ret)**
Vice President, New Museum Project.
- **Mr. David D'Auria**, Chairman of Architecture
& Acquisitions.
- **Mrs. Carol Stromberg**, Executive Assistant.
- **Fernando Partners**, a consultancy with expertise in
public-private project capitalization, organization
and development.
- **Ziger/Snead Architects**, who have developed initial
site plans and building concepts both through the
generous sponsorship of Corporate Office Properties
Trust and pro-bono.

Public team members include:

- **Gen Keith Alexander**, USA, Commander US Cyber Command; Director, NSA/CSS.
- **Mr. Chris Inglis**, Deputy Director, NSA/CSS.
- **Mr. Pat Weadon**, Museum Curator.
- **Ms. Judi Emmel**, Associate Director for Strategic Communications, NSA/CSS.
- **Ms. Trish White**, Strategic Communications Liaison to the NCMF.
- **Ms. Rene Stein**, NCM Librarian.





Early Milestones

Our Mission:
To **EDUCATE** the public
To **STIMULATE** visitor
understanding
To **COMMEMORATE** the
Cryptologic Community
To **INTEREST** and
ATTRACT people to
the profession

We are pleased to announce the following early project milestones:

Architecture & Site

- Comprehensive site and land use plan developed.
- Preferred location adjacent to main NSA buildings secured.
- Initial architectural concept for Cyber Center and Museum developed.
- Exhibit concepts for Museum under development.
- Site analysis and traffic studies to be initiated.
- Planning funds secured.

Financial Development

- Founders' Group initiated as primary leadership cohort, multiple meetings held.
- Eighteen new Founders recruited and participating, numerous others awaiting finalization.
- \$8 million+ in private funding secured, including first \$1 million+ individual gift.

- \$500,000 in planning funds secured from State of Maryland as initial disbursement against \$20 million long-term request.
- Funding outreach made at federal and local levels.
- Several hundred prospective corporate and individual donors identified.

Project Organization

- LtGen Kenneth Minihan assumes Founders' Group Chairman role on private side.
- NSA Deputy Director Chris Inglis assumes Project Management Officer role on public side.
- Hiring process for new full-time Chief Operating Officer underway.
- Cyber Center and New Museum Project organizational structure implemented within National Cryptologic Museum Foundation.
- Fernando Partners retained as professional counsel for financial development and project organization.

NATIONAL CRYPTOLOGIC MUSEUM FOUNDATION

BOARD OF DIRECTORS

Lincoln D. Faurer, Chairman, Lt Gen, USAF (Ret),
Former Director NSA/CSS

Richard C. Schaeffer, President

Orville Lewis, Vice President

Kirsten Eland, Secretary

Edward Jacobs, Treasurer

Leonard Moodispaw, General Counsel

John E. Morrison, MGen, USAF (Ret),
Chairman Emeritus (in memoriam)

Robert Rich, Vice President Emeritus,
Former Deputy Director NSA

BOARD MEMBERS

Billy Bingham, BGen, USAF (Ret)

William Black, Former Deputy Director, NSA

Whitfield Diffie

Elonka Dunin

Karl Gumtow

Keith Hall

Michael V. Hayden, Gen USAF (Ret),
Former Director NSA/CSS

Roderick J. Isler, MGen, USA (Ret)

Dr. David Kahn

Mark Lowenthal

Kenneth A. Minihan, LtGen, USAF (Ret),
Former Director NSA/CSS

Dr. Glen Miranker

Lisa Trombley

Dr. Don Winter

COMMITTEE CHAIRMAN

Billy Bingham, Brig Gen, USAF (Ret),
Chairman, Programs

Dr. Sally Botsai, Chairman,
Communications & Recognition

David M. D'Auria, Chairman, Architecture & Acquisitions

John Garcia, Outreach Consultant

Al Gray, Chairman, Membership

Dr. David Hamer, Vice Chairman,
Acquisitions & UK Liaison

Mary Hergert, Chairman, Development

Barbara McNamara, Chairman, Strategic Planning,
Former Deputy Director, NSA

Museum concept drawings and site maps provided courtesy of Ziger-Snead Architects.



NATIONAL CRYPTOLOGIC
MUSEUM FOUNDATION

Cyber Center for Education and Innovation
and New Museum Campaign

P.O. Box 1563
Millersville, MD 21108

443-270-5391
www.cryptologicfoundation.org

CIVIL WAR

WWII